

Caprice Afghan



This pattern is from my own personal collection that I have scanned and turned into a pdf for you to enjoy. Because they are from vintage sources there may be discoloration, tears and notations from the previous owner. Find more of my patterns at: www.donnascrochetdesigns.com

AFGHAN No. 6004

Approximately 48 x 72 Inches

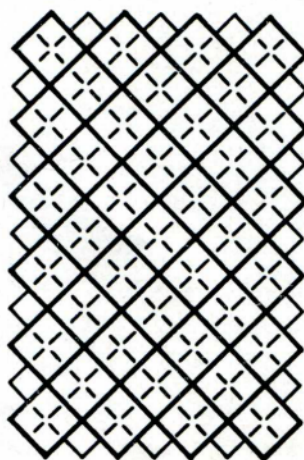
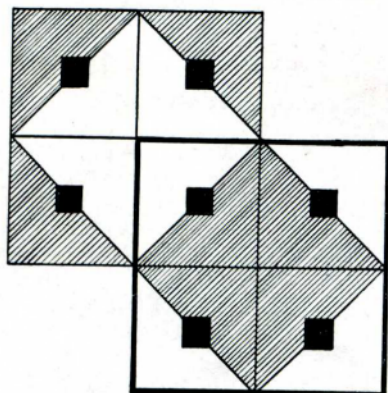
MATERIALS: CHADWICK'S RED HEART AFGHAN WOOL, 21 skeins (1 oz. skeins) of Light Rose, 21 skeins of Gobelin Blue and 10 skeins of Deep Purple.

MILWARD'S STEEL CROCHET HOOK No. 2/0 (double zero).

GAUGE: When joined, block measures 6 inches between opposite corners.

Starting at center, with Deep Purple ch 4, join. **1st rnd:** Ch 3 (to count as d c); in ring make 2 d c, ch 2, 3 d c, ch 2, 3 d c, ch 2, 3 d c, ch 2, join to 3rd st of starting ch-3. **2nd rnd:** Ch 2, yarn over, insert hook in top of ch-3 below and draw loop through; yarn over, insert hook in next d c and draw loop through; yarn over and draw through all loops on hook, ch 1 tightly (a group made). Yarn over, insert hook in same d c and draw loop through, yarn over, insert hook in next d c and draw loop through; complete group. * Make a group in 1st ch of corner ch-2, ch 2 more, another group in next ch; make 2 groups as before over next 3-d c group. Repeat from * around, ending with ch 2, group in 2nd ch of corner. Join and break off. **3rd rnd:** Attach Gobelin Blue to 2nd ch of one corner, ch 3, make a group in same ch, insert hook in next group (not in ch-1) and draw loop through; yarn over, insert hook in ch-1 of same group and draw loop through; yarn over and draw through all loops, ch 1. Make a group above each of next 3 groups in same manner, 1 group in 1st ch of corner, ch 1 more, 1 group in next ch of corner; continue along second side, ending with 1 group in 1st ch of corner. Draw a Light Rose loop through Blue loop, drop Blue, ch 1 with Light Rose and work around remaining 2 sides of square.

Dashes in heavy squares in chart at right indicate 4 joined blocks. Detail below.



Dashes in heavy squares in chart at right indicate 4 joined blocks. Detail below.

